

ZTE CORPORATION

ZTE MY39

**CDMA 1X-EVDO Wireless Data Card
User Manual**

Copyright © 2006 by ZTE Corporation

All rights reserved.

No part of this publication may be excerpted, reproduced, translated or utilized in any form or by any means, electronic or mechanical, including photocopying and microfilm, without the prior written authorization of ZTE Corporation.

ZTE Corporation reserves the right to make modifications on print errors or update specifications in this manual without notice.

Edition: 1st edition, July, 2006

10 9 8 7 6 5 4 3 2 1

Contents

| | | |
|----------|---|-----------|
| 1 | Welcome..... | 4 |
| 1.1 | Introduction | 4 |
| 1.2 | Warning and Notice | 4 |
| 1.3 | Software Drivers License..... | 6 |
| 1.4 | System requirements | 6 |
| 1.5 | Specification..... | 6 |
| 2 | Installation..... | 8 |
| 2.1 | Package Checking | 8 |
| 2.2 | Outline and Part Introduction..... | 8 |
| 2.3 | Software Installation | 9 |
| 2.4 | Hardware Installation..... | 15 |
| 2.5 | Safe removal of Hardware..... | 16 |
| 2.6 | Getting started | 16 |
| 2.7 | Software Uninstallation..... | 17 |
| 3 | Functions & Operation..... | 18 |
| 3.1 | Interface introduction | 18 |
| 3.1.1 | Main Interface | 18 |
| 3.1.2 | Description of Mini Icons..... | 18 |
| 3.2 | Connecting to Internet | 19 |
| 3.3 | History | 20 |
| 3.4 | Messages | 20 |
| 3.4.1 | Creating new message | 21 |
| 3.4.2 | Viewing Received Messages and Sent Messages | 22 |
| 3.4.3 | Settings..... | 23 |
| 3.5 | Contact..... | 23 |
| 3.6 | Settings | 25 |
| 3.6.1 | Security Settings..... | 25 |
| 3.6.2 | Networks..... | 26 |
| 3.6.3 | Ring tone | 26 |
| 3.6.4 | Default set | 27 |
| 3.7 | Help..... | 27 |
| 4 | FAQ & Answers | 28 |

1 Welcome

1.1 Introduction

Congratulations on purchasing ZTE MY39 wireless data card!

ZTE MY39 is a type of hybrid mode wireless data card, which is suitable for using under CDMA 1X-EVDO network. It fits into the PCMCIA card slot of most windows based laptop computers. It allows you to send and receive SMS (Short Messages Service), connects to internet and has an address book.

The manual will provide information needed to get started and effectively use your new ZTE MY39.

1.2 Warning and Notice

Before using the ZTE MY39, you must review the Safety Information outlined in this document.

General instructions

- Do not operate the data card in an area where prohibited by the law. Follow any special rules and regulations and obey all signs and notices. Always turn off the host device and remove the data card from the card slot when instructed to do so, or when you suspect that it may cause interference or danger.
- Please use original accessories or accessories that are authorized by ZTE. Using any unauthorized accessories may affect your data card's performance, and violate related national regulations about telecom terminals.
- Do not operate your data card in any area where a potentially explosive atmosphere may exist. Sparks in such areas could cause an explosion or fire resulting in bodily injury or even death. Be aware and comply with all signs and instructions.
- Users are advised not to operate the data card while at a refueling point or service station. Users are reminded to observe restrictions on the use of radio equipment in fuel depots (fuel storage and distribution areas), chemical plants or where blasting operations are in progress. Areas with

a potentially explosive atmosphere are often but not always clearly marked. Potential locations can include gas stations, below deck on boats, chemical transfer or storage facilities, vehicles using liquefied petroleum gas (such as propane or butane), areas where the air contains chemicals or particles, such as grain, dust or metal powders, and any other area where you would normally be advised to turn off your vehicle engine.

Hospital safety

- Do not operate your data card in any area where medical equipment, life support equipment, or near any equipment that may be susceptible to any form of radio interference. In such areas, the host communications device must be turned off. The data card may transmit signals that could interfere with this equipment.

Aircraft safety

- On an aircraft, either on the ground or airborne, in addition to FAA requirements, many airline regulations state that you must suspend wireless operations before boarding an airplane. Please ensure that the host device is turned off and your data card is removed from the card slot prior to boarding aircraft in order to comply with these regulations. The data card can transmit signals that could interfere with various onboard systems and controls.

Road safety

- The driver or operator of any vehicle should not operate a wireless data device while in control of a vehicle. Doing so will detract from the driver or operator's control and operation of that vehicle. In some countries, operating such communications devices while in control of a vehicle is an offence.

Caring for your ZTE MY39

- When not in use, fold the antenna down and store in a compartment where the card can be protected from being crushed or broken.
- Do not apply adhesive labels to the data card. This may cause the card to jam inside the PC Card slot of your notebook PC.
- The antenna extends freely, do not forcefully hyper-extend the antenna.

This may cause it to break.

- The data card should easily fit into the PC Card slot. Forcing the data card into the PC Card slot may cause considerable damage.
- Your data card should be stored in a dry and clean place (Storage temperature: - 30° to 65°C [86° to 149°F]). Protect your card from liquids, dust and excessive heat.

1.3 Software Drivers License

Proprietary Rights Provisions:

The software drivers provided with this product are copyrighted by ZTE Corporation. And although copyrighted, the software drivers are unpublished and embody valuable trade secrets proprietary to ZTE Corporation. The disassembly, Reverse Engineering of the software drivers for any purpose is strictly prohibited by law. The copying of the software drivers, except for a reasonable number of back-up copies, is strictly prohibited by international law. It is forbidden by international law to provide access to the software drivers to any person for any purpose other than processing the internal data for the intended use of the software drivers.

1.4 System requirements

Operating System: Windows 2000 / XP

CPU: Pentium 200MHz or above

Hard Disk: 5G or above(15MB free disc space for installation at least)

RAM: 64M or above

The performance of the card may be influenced if configuration under recommended requirement.

1.5 Specification

| | | |
|-----------------|---|--------------|
| Networks | CDMA 800MHz | CDMA 1900MHz |
| Dimension | 118×54×5mm | |
| Weight | Less than 60g | |
| Data Rate | 2.4Mbps | |
| Working Voltage | 3.3V (Using the notebook computer power supply) | |

| | |
|--------------------|-----------------------------|
| Current Loss | Sleep: 30mA Max: 800mA |
| Max Emission Power | 27dbm |

2 Installation

2.1 Package Checking

Double-check that the following items are included in the kit when you unpack it:

- A ZTE MY39 wireless data card (with antenna) .
- The Installation CD that contains the software & User Manual

2.2 Outline and Part Introduction

Review the illustration below to familiarize yourself with the key components of the ZTE MY39.



Data card: This is the device provides wireless data solutions when plugged into a laptop.

Computer Interface Connector: Connects to your laptop via the computer PCMCIA slot.

Service LED: visual indicator that shows you service and data mode.

Indicator Light Status:

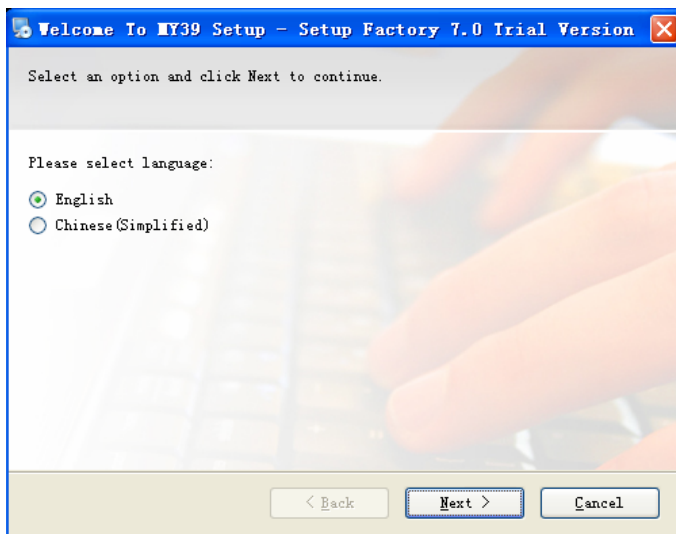
Green/Lighting: Data card inserted to card slot and power on.
Green/Blink: Connecting to network.

2.3 Software Installation

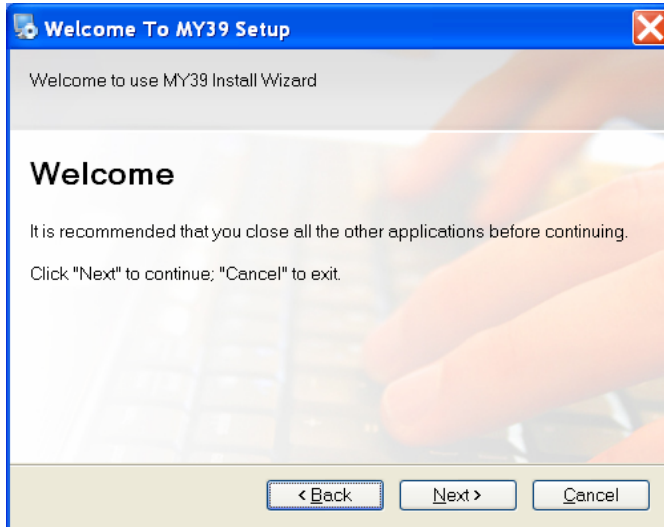
WARNING: Do not insert the ZTE MY39 into the laptop's PCMCIA card slot before installing the software.

Turn on your laptop, and insert the CD-ROM into your CD drive.

1. Close any Windows applications that are currently running on your system. Insert the CD that came with the ZTE MY39 data card. The installation program should start automatically. If the program does not launch, select Start → Run from the Windows taskbar and enter F:\MY39.exe (where F is the letter of the CD-ROM drive). Click **OK** to begin installing the software.
2. Select a language and click **Next** to continue.



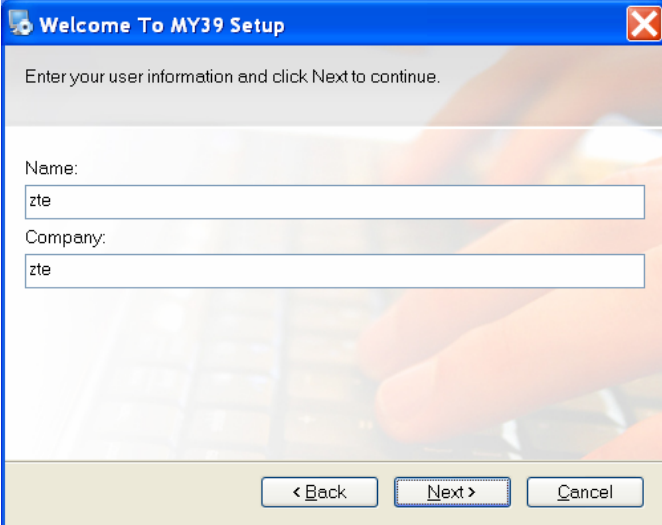
3. Click **Next** to continue installing the ZTE MY39 software on your computer.



4. Read the license agreement and select **I accept the agreement**. Click **Next** to continue.



5. Enter your Name and Company in the space provided and click **Next**.



Welcome To MY39 Setup


Enter your user information and click Next to continue.

Name:
zte

Company:
zte

< Back Next > Cancel

6. Select a destination folder for the software components, or use the default location provided (recommended). Click **Next** to continue.



Welcome To MY39 Setup

Where would you like MY39 to be installed?

Setup will install MY39 in the following folder.

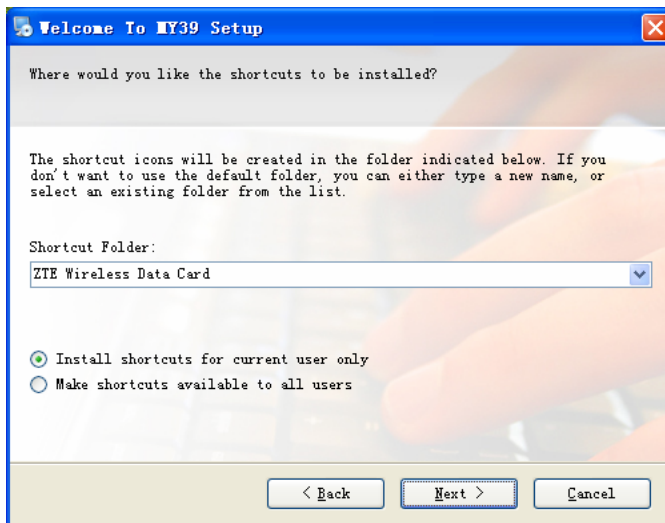
To install to this folder, click "Next". To install to a different folder, click "Browse" and choose another folder.

MY39 will be installed in:
C:\Program Files\ZTE Browse...

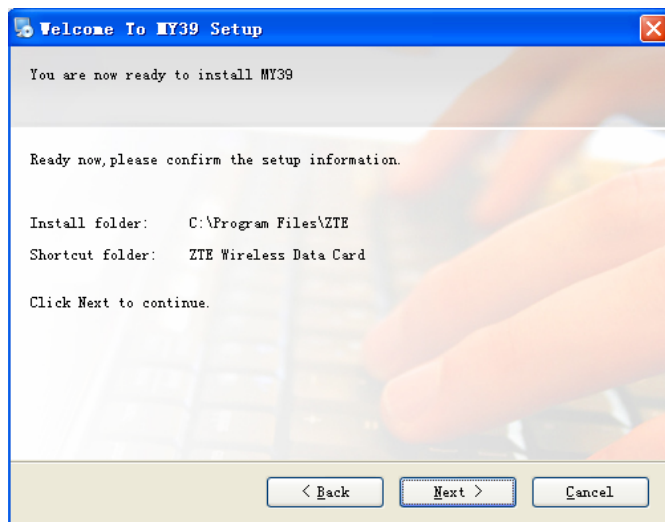
Required Space: 24.6 MB
Free Space: 4.14 GB

< Back Next > Cancel

7. Enter a location for the shortcut folder, or use the default folder provided. Select whether the application will be available only to the current user, or to all users. Click **Next** to continue.



8. Confirm the setup information and click **Next**.



9. The program files will be installed, and you will be prompted to insert the data card. After inserting the data card, the Windows Found New Hardware Wizard may appear 3 times. If the user wants to install the driver automatically, please refer to step 10 directly. If the user wants to install the driver manually then refer to step 11.
10. Click “Cancel” for three times, then go forward to step 16.
11. Select “**No, not this time**”, click **Next** in Window Found New Hardware wizard.



12. Select **Install the software automatically** (Recommended), click **Next**.



13. The wizard will Find the new drivers for data card (On the CD), click **Next** button in the form to install it.
14. The drivers are not signed by Microsoft, and you will have to click **Continue Anyway**.



15. The wizard will finish installing the driver. Click **Finish** in the **Found New Hardware Wizard** to complete the driver installation.
16. The Windows **Found New Hardware Wizard** will appear for two other device drivers. Follow the procedure from **Step 11** to **Step 15** to install the drivers.
17. If the user clicks **Cancel** in Window Found New Hardware wizard. The MY39 Set up window will continue installing the drivers.
18. Click **Finish** to exit the set up.

Note: For user Cancel the windows installation, Windows will prompt that there may be a problem with the driver installation. It doesn't matter the driver have been installed successfully by our installer software.

2.4 Hardware Installation

1. Make sure that your UIM card can support voice service, data and CDMA1X services. Please consult your local network operator for detailed information.
2. Insert the UIM card with metal contact tip facing down into your MY39 slot. Ensure that it is tightly inserted.



3. Insert the ZTE MY39 into your laptop's PC Card Slot with the label side facing up. Adjust the antenna to horizontal level when the data card is not in use. Rotate the antenna to 90° angle to ensure it can get the best intensity of the receiving signal.
4. Once you have inserted the card properly, your Windows operating system will notify that new hardware has been detected.





5. Insert the data card into the laptop's card slot, if it works normally, the LED will light after 5s or 6s. If the LED does not light, it indicates that the laptop does not insert properly or there exists some malfunction with the data card or laptop.

Note: If UIM card is not supported, step 1 and 2 are omitted.



2.5 Safe removal of Hardware

1. Close the software. Right click the tray icon  and left click close.
2. Remove the hardware. Right click on the PCMCIA icon  in your system tray and left click close.
3. Select the NEC PCI to USB Open Host Controller.
4. Click Stop in the device pop-up screen.
5. Push the laptop latch release, and then pull the data card out of the slot.


Note: Once the data card is inserted, do not physically remove the ZTE MY39 from the Card slot until you have completed the Unplug process. Removing the card improperly may cause a fatal error to your laptop.

2.6 Getting started

After the software and hardware is installed and connected normally,

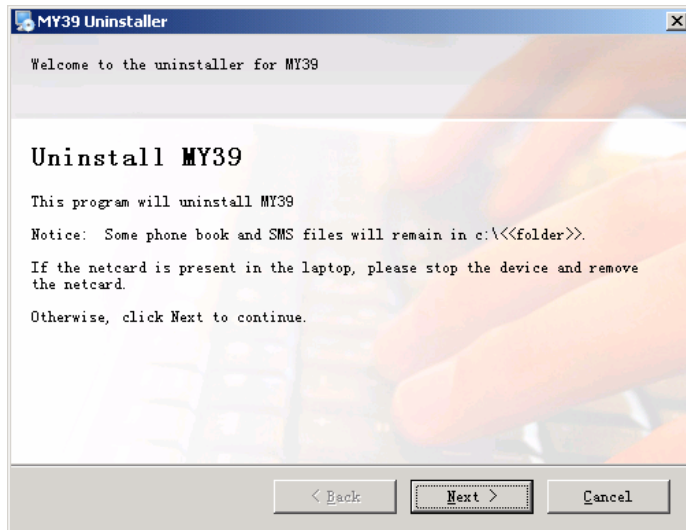
the Service LED is lighted. Click the windows **Start** menu and select **ZTE Wireless data card**→ **ZTE MY39** from the list of programs.

Or double click on the shortcut icon  on your desktop.

After wireless data card is initialized, main interface appears. When the standby icon  appears, the card can work properly.

2.7 Software Uninstallation

1. Click **Start** → **Programs**→ **ZTE Wireless data card**→ **uninstall**, to uninstall the dialer software.











2. Click **Next** to uninstall the software. This process may take several minutes.

3 Functions & Operation

3.1 Interface introduction





3.1.1 Main Interface

There will show various function button icons. Press different function button to carry out corresponding operation.

-  : Main
-  : Internet
-  : History
-  : Message
-  : Contact
-  : Setting
-  : Help
-  : Signal strength

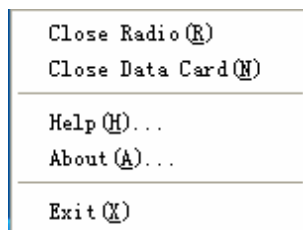
3.1.2 Description of Mini Icons

1. Tray Icons Description

-  The data card hasn't been connected.
-  The data card is initializing.
-  The data card has been connected.
-  The data card has been locked

2. The uses of Tray Icons:

Right Click the tray icons, the following menu will appear:



Close/Open Radio: Turns the radio off or on. Turn the radio off to comply with FAA regulations, where radio devices must be off during flight.

Close Data card: Turns the device power on or off. Turn the power off on the wireless device to reduce the power consumption of the device, and to increase battery life when not using wireless data.

Help: Enter the interface of Help.

About: View the information of the application software versions.

Exit: Shut down the application interface and stop the data card from working.


3.2 Connecting to Internet

You can browse web pages after you have accessed to Internet with the help of data card, you can also receive SMS when surfing in the Internet.

1. Connecting to the Internet:


Click the **Internet** icon, and then click “**Connect**”.

When connected, “Status: connected successfully!” will appear together with data amount, connected time and so on.

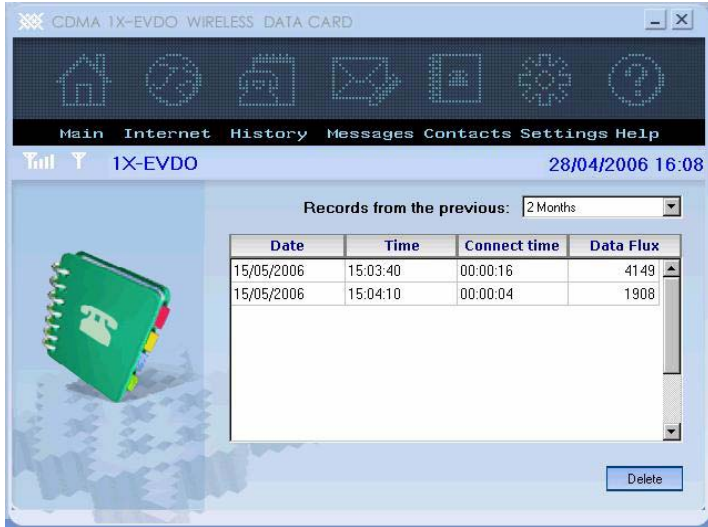
At the same time, an icon  on tray area will appear to indicate the connection status.

When CDMA 1X appears on the interface, click “Connect” to connect with CDMA 1X network. When EVDO appears on the interface, click “Connect” to connect with EVDO network. Please contact with service operator for detailed billing price.

2. Disconnecting the Internet:

Click “**Disconnect**” button to disconnect the Internet. After disconnected, a normal standby icon  will appear on tray area.

3.3 History



Select the time duration saving the records of connecting to the internet. The information includes date, time, connect time, data flux. Select a record and click **Delete** to delete a record.

3.4 Messages

Click **Message** to switch to the Message interface. The number of messages saved in the inbox, outbox and draft will appear. The user can click icons of “**Create**”, “**InBox**”, “**OutBox**”, “**Drafts**” to enter relative interface.



- **Inbox:** View the received SMS. It can hold up to 49 messages. When it is full, a new incoming message will replace the oldest one in the inbox.
- **Outbox:** View the sent SMS if you select “Auto Save Sent Message” in **Settings** submenu.
- **Drafts:** View the saved messages.

Note: SMS operation related with UIM card is not supported.

3.4.1 Creating new message

- Click **Create** to send a TXT to an individual or multiple subscribers.
- You can enter the recipient's number or numbers in the receiver address blank, use ";" to separate recipients. Or click **Contacts** button to open the contacts window, simply double click on the name of the user and that individual automatically be added to the **receiver** field. Holding down "ctrl" Key while you click names from the lists will allow you to select multiple names at once. You can enter the group name directly in the receiver address blank, the message will be sent to the all recipients saved in the group.

- The phone number and the message field are required.
- Click **Send**. “Sending success” appears after the message is sent successfully, “sending failed” appears after the message is sent unsuccessfully.
- Select Save to save messages to the Draftbox.

Note: The SMS centers of some cities and regions do not support a message longer than 140 English characters.

You can also send short messages while surfing the Internet.

3.4.2 Viewing Received Messages and Sent Messages

- Click **Inbox**” button to check the received short messages, click the **Outbox** to check the sent short messages, click the **Drafts** to check the saved short messages.
 - **Read:** Select a record, and click **Read**. You can read all the information of short messages including the content of short messages, sender phone number, delivered date and time.
 - **Reply:** Select a record, and click **Reply**. The phone number of the sender will be populated in the send area. Enter your message and **Send** to send the messages. (appears only in Inbox)
 - **Forward:** Send the short message to the other recipients.
 - **Delete:** Delete the selected short messages.
 - **Delete All:** Delete all saved messages.
 - **Quit:** Return to the Message main interface.
- When a new message arrives, “You have a new message from XXX” will appear. When there are more than one message arriving at the same time, “You have new messages” will appear. Click **Read**, the interface will automatically switch to Inbox, and be displayed in red.

Note: Minimize the new message prompt box to read it later. It will not pop up again to interfere with your work when other new messages come.

3.4.3 Settings

1. Common settings

Click **Settings** and then click **Common Settings**

You can select the time of saving your messages in SMS center.

Tick the “**Auto Save Sent Messages**” to save sent messages automatically in **Outbox**.

Click **Apply** to confirm setting, or click **Cancel** to original setting.

2. Group settings

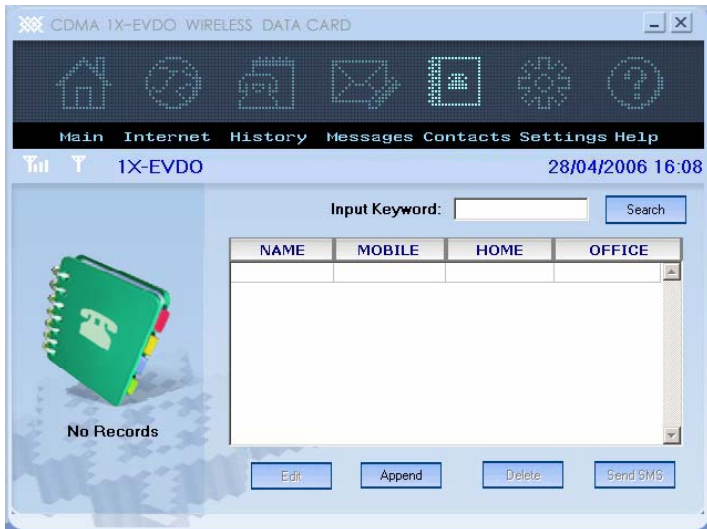
This application enables you to create groups. You can send message to multiple recipients saved in a group. You can edit up to 10 groups and up to 10 records in one group. Each record consists of name and mobile phone number.

- Add Group: add a new group. Remember to input the Group name in the first step.
- Edit Group: Edit a selected group
 - Add: Add a new record
 - Edit: Edit the selected record
 - Delete: Delete the selected record
 - Contact: Enter a new record selected from the contact
- Delete Group: Delete a selected group

Click **Apply** to confirm setting, or click **Cancel** to original setting.

3.5 Contact

Click **Contact** to switch to the phone book interface. Each record includes contact name, mobile phone number, family phone number, office phone number, email address.



- **Edit:** Select a name from the list and click **Edit** button.
 - **Save:** Save the edited record.
 - **SMS:** Send a short message to mobile phone number written in the record.
 - **Cancel:** Not save any changes you have made.
- **Append:** Append a new record.
 - **Save:** Save the currently edited record.
 - **Cancel:** Cancel edited information.
- **Delete:** Delete a selected record.
- **Send SMS:** Send message to the mobile phone numbers written in the records.
- **Search:** Input the characters or numbers or names in the blank and click search, the records matching the terms will be displayed.

Note: Contacts operation related with UIM card is not supported.

3.6 Settings

Click **Settings** to switch to the settings interface. It includes: security, networks, ring tone, default set.



3.6.1 Security Settings

■ Common:

- Disable Windows Standby: Select to disable windows interface to standby mode.
- Enable PIN: Select to enable or disable PIN. Input the PIN code and click on the "OK" button. If enabled, you need to input PIN code when you open the software(This function is only used in version supporting UIM card).
- History save time: Select the duration of saving the internet surfing records. You can choose at most 12 months, the default setting is 2 months.
- Lock/unlock card: Input password to lock/unlock card. Lock card disables you from connecting to internet. The default password is set to "1234".

■ **Backup:**

- Backup contact: Click **Browse** to select a file to save contact records.
- Backup SMS: Click **Browse** to select a file to save SMS records.

■ **Change password:** Change the lock code.

- Input Original Password: Enter your current lock code.
- Input new Password: Enter your new lock code.
- Confirm Password: Re-type your new lock code.

■ **Modify PIN:** Change the PIN code(This function is only used in version supporting UIM card).

- PIN: Enter your current PIN code.
- New PIN: Enter your new PIN code.
- Confirm PIN: Re-type your new PIN code.
- Click on the “Modify” button to confirm.

Click **Apply** to confirm operation and click **Cancel** to original setting.

3.6.2 Networks

To ensure that the data card can connect the Internet properly, you should configure the user configuration information at first.

The user configuration information includes: user name, password, connect number. Please consult the network service provider for all above information. The user configuration information may be different with the network supplier and network types.

Click **Apply** to confirm operation and click **Cancel** to original setting.

3.6.3 Ring tone

You can set **Connection ringtone**, **Disconnect ringtone**, **Message ringtone** by yourself. The alert will sound on the laptop side. The audio file supports WAV format. If you select **Mute**, you cannot hear corresponding alert.

Click **Apply** to confirm operation and click **Cancel** to original setting.

3.6.4 Default set

Restore to original factory settings including network configuration and ringtone except information saved in contacts and messages.

3.7 Help

Click the **Help** icon, and switch to the help interface. Under the help topic, you can get the data card information about functions introduction, installation and usage guide and published date of application software and hardware, etc.

4 FAQ & Answers

When you meet the following problems in service, please refer to the following answers to solve it. If the problems still exist, please contact with your suppliers.

| Problem Description | Possible Causes | Problem Solving |
|---|--|---|
| After MY39 Dialer software is open, the data card is initiated for a long time and then prompted "data card has error". | Problem with data card Dialer software installation or PCMCIA card slot. | Firstly check the data card light, if the light is not illuminated, make sure that PCMCIA card slot is OK and then reinsert. If the light is illuminated, right click "My computer", Select "Property"->"Hardware"->"Device Manager" , if there is a yellow exclamatory mark before the USB device or the Ports, please reinstall the software. If the problem still exists, please consult the data card provider. |
| After restarted the computer, there is no signal all the time. | 1. The position of the data card antenna is unfitting. | 1 Adjust the angle of the data card antenna. |
| | 2. You are in the place where no CDMA 1X or EVDO network covered, such as underground parking lot, tunnel etc. | 2. Change to the place where have good signal. |
| | 3. The data card isn't inserted well. | 3. Pull out and insert the data card safely again. |
| | 4. RF is closed | 4. Right click the tray icon to open the RF. |

| | | |
|--|--|---|
| When the data card is being installed, the notebook computer cannot find it. | 1. The installation programs of the data card haven't been installed properly. | 1. Insert the data card, and then run the installation program. If you use the Win XP operating system, install the drivers according to the Windows indication information to operate. |
| | 2. The data card isn't inserted well. | 2. Restart the computer, or insert the data card again. |
| Message sent failed. | RF is closed or network problem. | Right click the tray icon to open the RF. Check with the network operator if the problem still exists. |
| Data connection failed. | 1. The position of the antenna isn't proper. | 1. Adjust the angle of the antenna. |
| | 2. You are in the place where no CDMA2000 1X or CDMA EVDO network covered, such as underground parking lot, tunnel etc. | 2. Change to the place where have good signal. |
| | 3. The network at this time in this place is busy now. | 3. Try later. |
| | 4. The dial number, username or the password in the user configuration files is wrong. | 4. Check the configuration in the "Network Settings" |
| Connected to the Internet, but it cannot open any website page. | 1. The IE browser got problems. | 1. If the IE got problems, upgrade to the new version or reinstall the IE browser. |
| | 2. The operating system is infected by virus (Such as Worm. Blaster which can take up a quantity of upload data flow and result that it can't receive download data flow so that you cannot open any website.) | 2. Use the professional anti-virus software to check and kill the virus in the operating system completely. |

| | | |
|--|---|--|
| SMS sending failed, or internet disconnected when surfing the internet. | Network problem or data card is not enabled. | Reconnect the network or close the dialer and then try reinserting the data card. |
| No alert tone when receiving SMS or disconnect the network. | The current setting is mute, the ring tone file is destroyed or deleted, and sounds card is disabled. | Make sure that the current setting is not mute, the ring tone file is able and the sounds card works properly. |
| "Number valid" is prompted when sending SMS | You have the written characters that is not the numbers or "+". | Delete the characters that is not the number or "+". |
| Select "CDMA 1x only" or "EVDO only" when choosing the network manually. | No related record in PRL. | Some internet service provider only supports CDMA 1X or EVDO. |
| Connection fails. | Data card is locked. | Unlock the data card. |
| The network record is missed. | Saving time is over passed. | Revise the saving time. |
| The information of SMS, Contacts, Groups and History is lost after the SW is upgraded. | Database is not backed up before SW uninstallation. | User should backup the database file and then uninstall the SW, after SW is reinstalled, backed up file should be copied to installation catalog. Or user can install the SW directly and search the backup database file under C root directory, uninstallation the SW is not needed under this case. |